

# Fact Book 2024/3

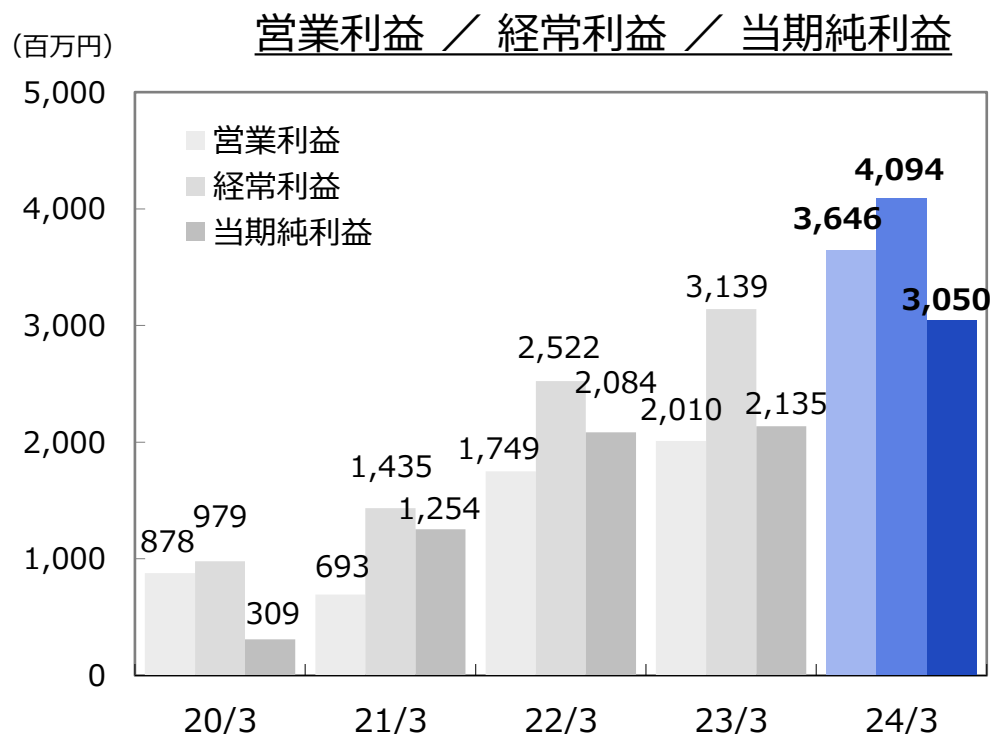
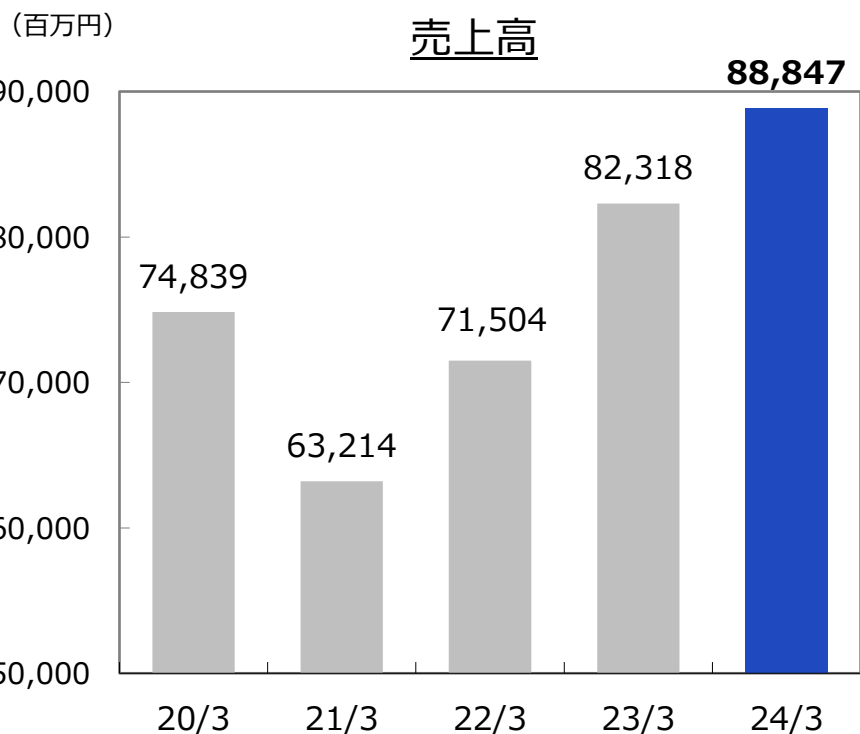
株式会社 フコク (証券コード : 5185)  
Fukoku Co.,Ltd. (Ticker Code : 5185)

## INDEX

P2	業績_連結	／ Financial Results Consolidated
P3	収益性_連結	／ Revenues Consolidated
P4	財務状態_連結	／ Financial Condition Consolidated
P5	安定性_連結	／ Stability Consolidated
P6	1株当たり指標_連結	／ Per Share Data Consolidated

# ◇ 業績\_連結 / Financial Results Consolidated

決算期	Fiscal Year Ended	2020/3	2021/3	2022/3	2023/3	2024/3
売上高 (百万円)	Net Sales (¥Millions)	74,839	63,214	71,504	82,318	<b>88,847</b>
営業利益 (百万円)	Operating Income (¥Millions)	878	693	1,749	2,010	<b>3,646</b>
経常利益 (百万円)	Ordinary Income (¥Millions)	979	1,435	2,522	3,139	<b>4,094</b>
当期純利益 (百万円)	Net Income (¥Millions)	309	1,254	2,084	2,135	<b>3,050</b>



# ◇ 収益性\_連結 / Revenues Consolidated

決算期	Fiscal Year Ended	2020/3	2021/3	2022/3	2023/3	2024/3
売上高営業利益率 (%)	Operating Income to Net Sales (%)	1.2	1.1	2.4	2.4	<b>4.1</b>
売上高経常利益率 (%)	Ordinary Income to Net Sales (%)	1.3	2.3	3.5	3.8	<b>4.6</b>
売上高当期純利益率 (%)	Net Income to Net Sales (%)	0.4	2.0	2.9	2.6	<b>3.4</b>
自己資本当期純利益率 (%)	Return on Equity (ROE) (%)	1.0	4.2	6.7	6.3	<b>8.1</b>
総資産経常利益率 (%)	Return on Assets (ROA) (%)	1.5	2.2	3.9	4.6	<b>5.5</b>

(注) 売上高営業利益率 = 営業利益 / 売上高 × 100

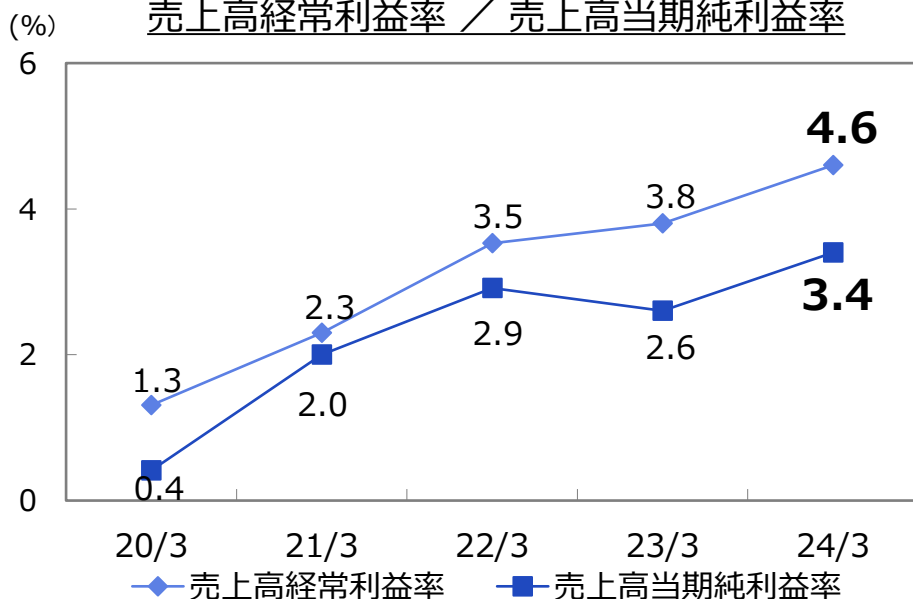
売上高経常利益率 = 経常利益 / 売上高 × 100

売上高当期純利益率 = 当期純利益 / 売上高 × 100

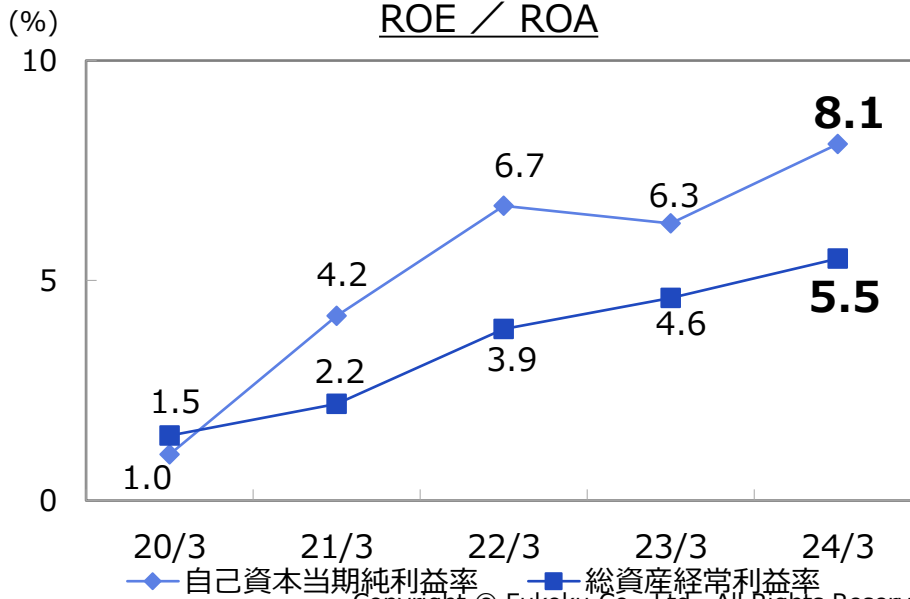
自己資本当期純利益率 = 当期純利益 / 自己資本(当期末・前期末の平均値) × 100 (\*) 自己資本 = 株主資本 + 評価・換算差額等

総資産経常利益率 = 経常利益 / 総資産(当期末・前期末の平均値) × 100

売上高経常利益率 / 売上高当期純利益率



ROE / ROA

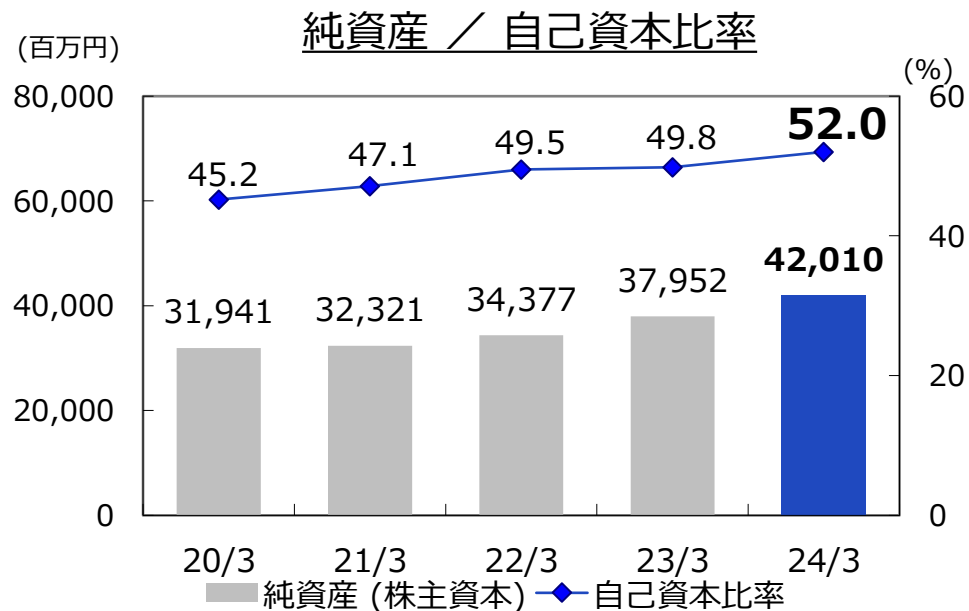
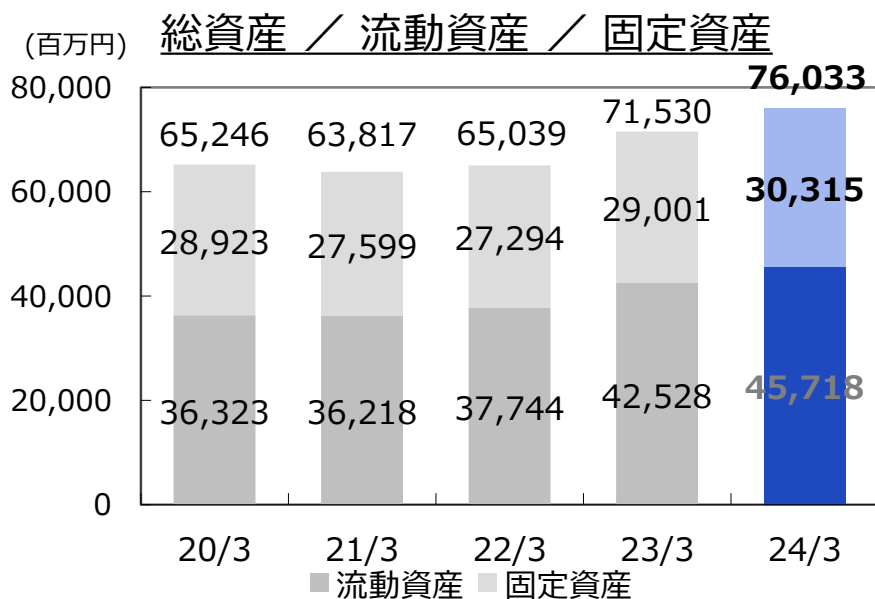


# ◇ 財務状態\_連結 / Financial Condition Consolidated

決算期	Fiscal Year Ended	2020/3	2021/3	2022/3	2023/3	2024/3
総資産 (百万円) Total Assets (¥Millions)		65,246	63,817	65,039	71,530	<b>76,033</b>
流動資産 (百万円) Current Assets (¥Millions)		36,323	36,218	37,744	42,528	<b>45,718</b>
固定資産 (百万円) Fixed Assets (¥Millions)		28,923	27,599	27,294	29,001	<b>30,315</b>
有利子負債 (百万円) Interest-Bearing Liabilities (¥Millions)		12,949	12,133	10,969	13,054	<b>11,587</b>
純資産 (株主資本) (百万円) Shareholders' Equity (¥Millions)		31,941	32,321	34,377	37,952	<b>42,010</b>
自己資本比率 (%) Shareholders' Equity Ratio (%)		45.2	47.1	49.5	49.8	<b>52.0</b>

(注)有利子負債 = 短期借入金 + 長期借入金 + 社債 + リース債務

自己資本比率 = 自己資本 / 総資産 × 100      (\*) 自己資本 = 株主資本 + 評価・換算差額等



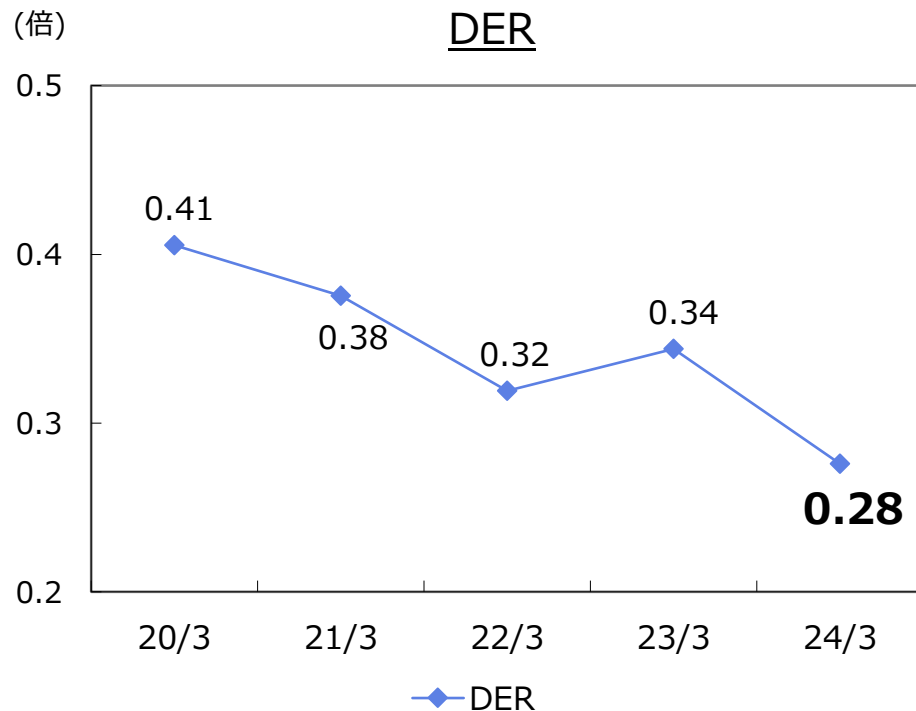
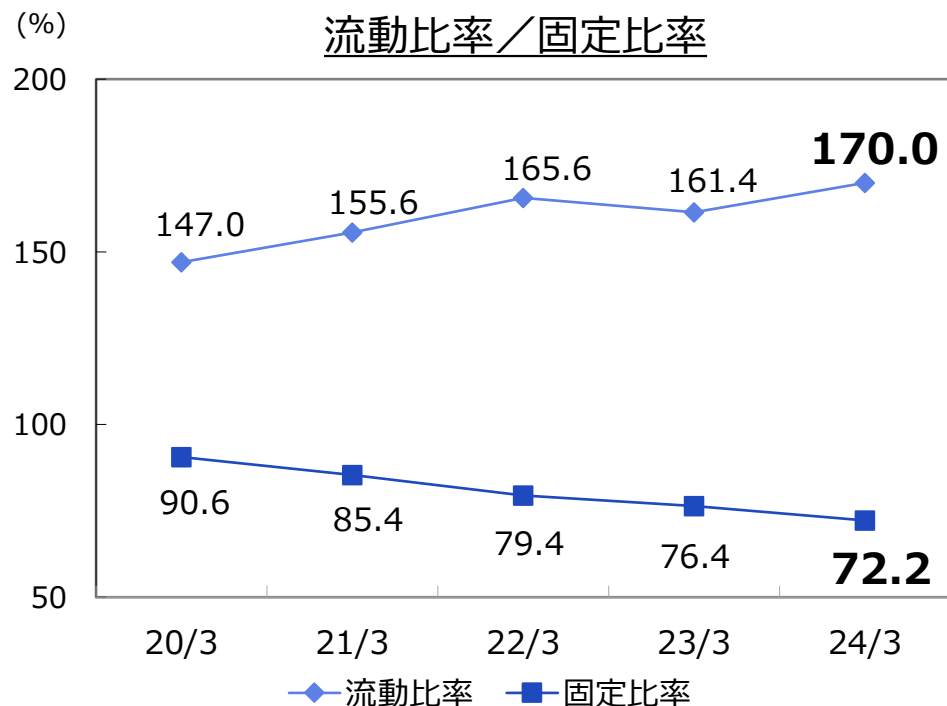
# ◇ 安定性\_連結 / Stability Consolidated

決算期	Fiscal Year Ended	2020/3	2021/3	2022/3	2023/3	2024/3
流動比率	(%) Current Ratio (%)	147.0	155.6	165.6	161.4	<b>170.0</b>
固定比率	(%) Fixed Assets Ratio (%)	90.6	85.4	79.4	76.4	<b>72.2</b>
DER	(倍) Debt-Equity Ratio (-)	0.41	0.38	0.32	0.34	<b>0.28</b>

(注) 流動比率 = 流動資産(期末) / 流動負債(期末) × 100

固定比率 = 固定資産(期末) / 純資産(期末) × 100

DER = 有利子負債(期末) / 純資産(期末)



# ◇ 1株当たり指標\_連結 / Per Share Data Consolidated

決算期		Fiscal Year Ended	2020/3	2021/3	2022/3	2023/3	2024/3
期末発行済株式総数	(千株)	Number of Shares Outstanding at Fiscal Year End (thousands)	17,609	17,609	17,609	17,609	<b>17,609</b>
1株当たり当期純利益	(円)	Net Earnings per Share (EPS) (¥)	18.67	75.69	127.24	132.61	<b>189.35</b>
1株当たり純資産	(円)	Net Assets per Share (¥)	1,780.73	1,814.33	2,002.05	2,211.12	<b>2,453.38</b>

